



Trillium Health Partners – Credit Valley Hospital

**Oncology Radiation Treatment Expansion
Cumulus Architects Inc. Project No.: 23010
WSP Project No.: CA0003678.3329**

ISSUED FOR ELECTRICAL ADDENDUM 1

February 4, 2026

INCLUDE IN YOUR BID AMOUNT FOR THE FOLLOWING ITEMS OF ADDITION, DELETION OR CLARIFICATION. INDICATE IN THE SPACE PROVIDED ON THE BID FORM THAT YOU HAVE RECEIVED AND INCLUDED FOR THE REQUIREMENTS OF THIS ADDENDUM.

1. ISSUED DRAWINGS

Following drawings are issued with and form part of this addendum (include for additional work and/or revisions as shown/noted):

1.1 ELECTRICAL DRAWING E200

1.1.1 Revised note 3 referring to LV6 dimmer switch lighting zone controls.

1.2 ELECTRICAL DRAWING E506

1.2.1 Revised Detail 3 to remove feeder sizing, refer to feeder labels in Detail 1.

1.2.2 Detail 1, label for feeder to PP-1F-32 revised to remove MICC.

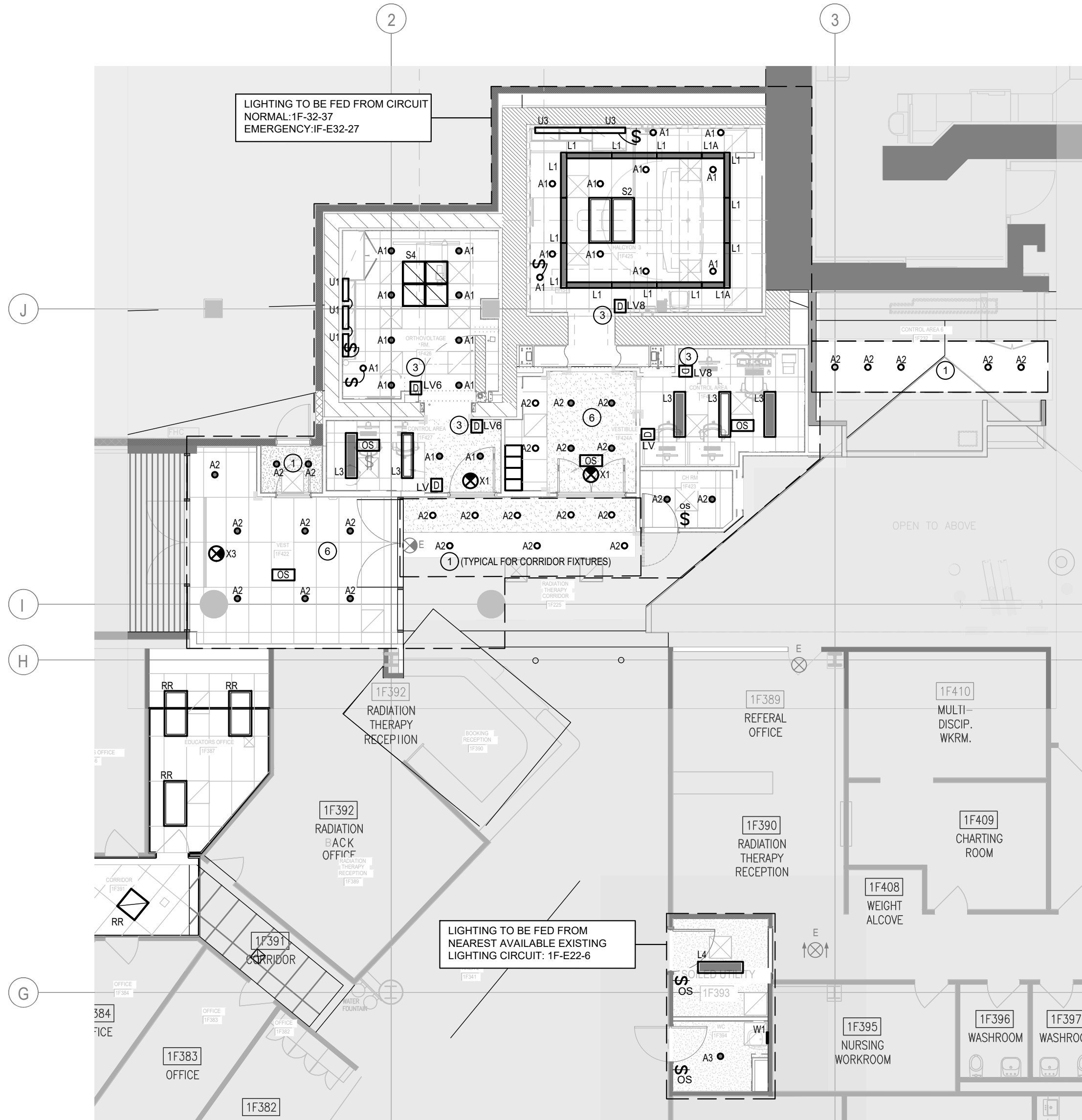
1.2.3 Detail 1, panel label in electrical closet 1F385 corrected to “PP-1F-E31” fed from DP-1F-E3.

1.3 ELECTRICAL DRAWING E900

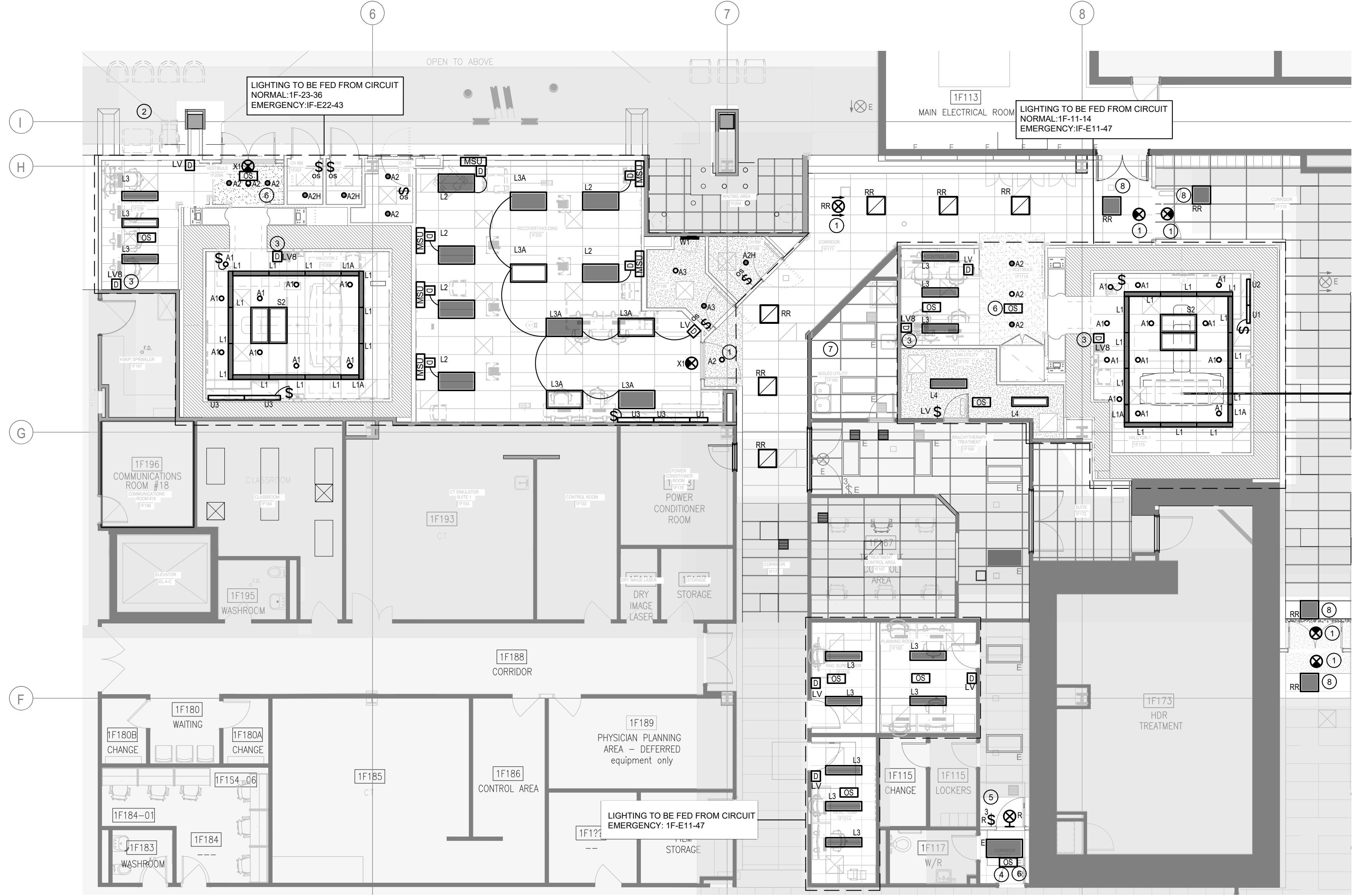
1.3.1 Added fixture types to Luminaire schedule in Detail 2.

- A2H – same as A2 except for 2500LM output.
- L1A – same as L1 except for 1'x2' dimensions.
- L3A – same as L3 except for 2'x4' dimensions.

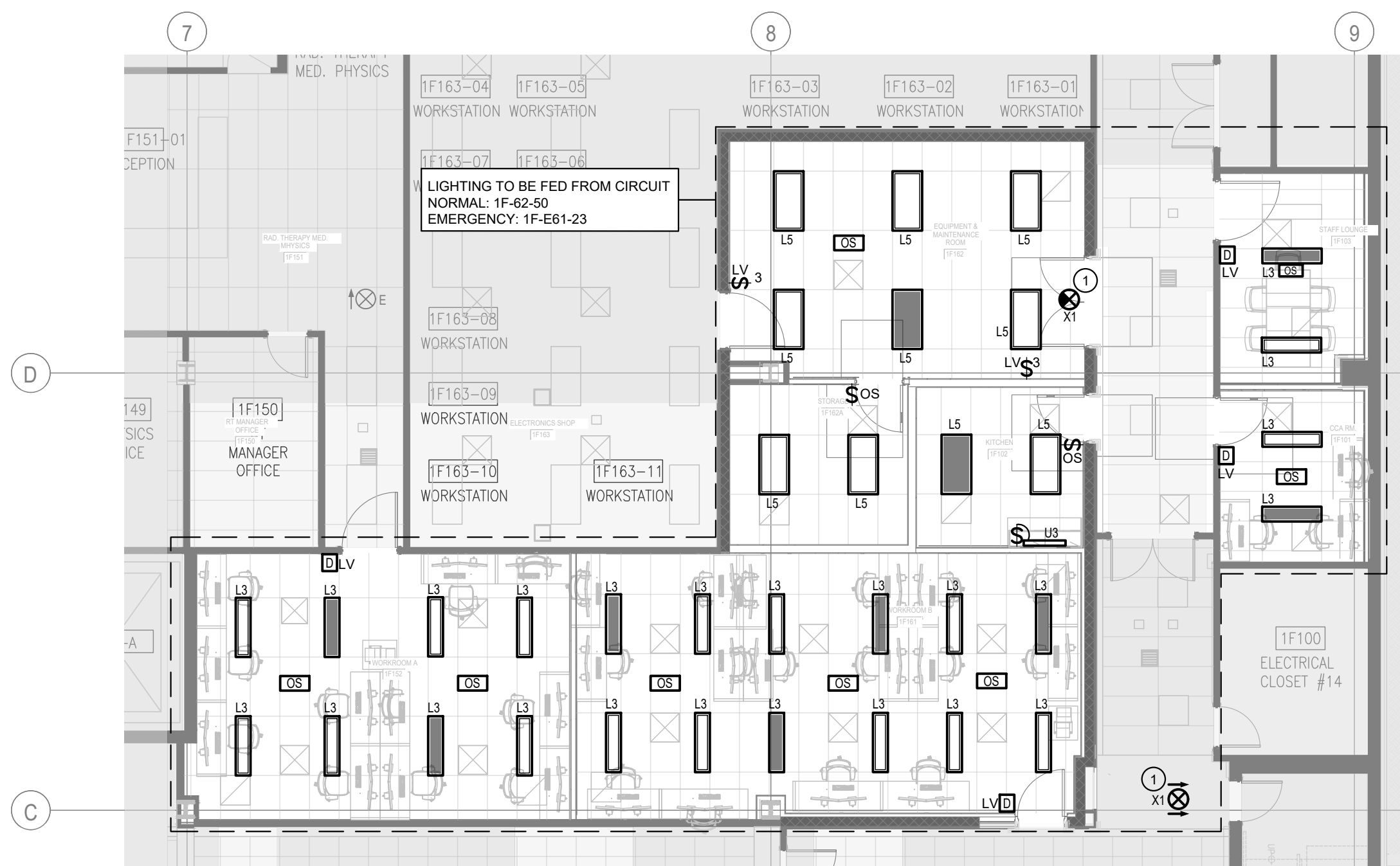
END OF ELECTRICAL ADDENDUM 1



1 PART PLAN 1 - LIGHTING NEW WORK
E200 1:100



2 PART PLAN 2 - LIGHTING NEW WORK
E200 1:100



3 PART PLAN 3 - LIGHTING NEW WORK
E200 1:100

DRAWING NOTES:

- INDICATED FIXTURE TO BE CONNECTED TO THE NEAREST AVAILABLE NORMAL OR EMERGENCY LIGHTING ZONE AS REQUIRED AND CONTROLS SHALL MATCH NEAREST EXISTING FIXTURE.
- LIGHTING IN THIS AREA ARE EXISTING TO REMAIN.
- LIGHTING IN THE PROCEDURE ROOM TO BE CONTROLLED VIA TWO(2) 8-BUTTON WALL DIMMER SWITCHES, ONE LOCATED IN THE PROCEDURE ROOM AND THE OTHER IN THE ADJACENT CONTROL ROOM.
8-BUTTON DIMMER SWITCH TO CONTROL FOUR(4) LIGHTING ZONES. TWO BUTTONS FOR EACH ZONE TO RAISE AND LOWER THE LIGHTING LEVEL CONTINUOUSLY.
ZONE 1: 1 x 4 SURGICAL LUMINARIES
ZONE 2: GENERAL LIGHTING (DOWNLIGHTS)
ZONE 3: SKYLIGHT PANEL
ZONE 4: ALL LIGHTING IN ZONE 1, 2 AND 3
- ORTHOVOLTAGE LIGHTING CONTROL IN ROOM 1F126 TO MATCH THE ABOVE CONTROL SCHEME FOR ZONES 2, 3, AND 4 WITH A 6-BUTTON DIMMER SWITCH.
- DISCONNECT INDICATED FIXTURE FROM EXISTING LIGHTING CONTROL AND CONNECT TO NEW LOCAL OCCUPANCY SENSOR. MAINTAIN EXISTING CIRCUITING.
- REINSTALL INDICATED EXISTING 3-WAY LIGHT SWITCH AND RECONNECT TO CONTROL EXISTING CORRIDOR LIGHTING CIRCUIT.
- ALL LIGHTING IN VESTIBULE TO BE DIMMED TO 20% WHEN ROOM IS VACANT. LUMINAIRES TO BE TURNED TO FULL BRIGHTNESS WHEN MOTION IS DETECTED OR IN EVENT OF POWER LOSS.
- REMOVE AND REINSTALL EXISTING DEVICES LOCATED IN THE CEILING TO FACILITATE WORK ABOVE THE CEILING. COORDINATE WITH MECHANICAL CONTRACTOR.
- LIGHTING FIXTURES NEAREST TO THE MAGLOCK DOORS TO BE RE-CIRCUITED TO NEAREST EMERGENCY LIGHTING CIRCUIT CONNECTION.

GENERAL LIGHTING NOTES:

- EXACT LOCATION OF ALL LIGHT FIXTURES AS INDICATED ON ALL PLANS. SHALL BE AS PER ARCHITECT'S REFLECTED CEILING PLANS, ELEVATIONS AND DETAILS. QUANTITIES OF LUMINARIES SHALL ACCOUNTED AS PER THE ELECTRICAL FLOOR PLAN.
- REFER TO SHEET E900 FOR LUMINARIE SCHEDULE.
- ALL EMERGENCY LUMINARIES TO BE TURNED TO FULL BRIGHTNESS IN EVENT OF EMERGENCY OR LOSS OF NORMAL POWER. PROVIDE EMERGENCY LIGHTING CONTROL UNIT.
- REFER TO DRAWING E901 FOR LIGHTING CONTROL SCHEMATIC DIAGRAMS.

CLIENT:

Trillium Health Partners
2200 Eglinton Avenue West
Mississauga, ON, L5M 2N1
905 813 2200
thp.ca

CONSULTANT:

CUMULUS ARCHITECTS INC.
160 Pears Ave. - Suite 300
Toronto, ON M5R 3P8
416-539-0763
www.cumulusarch.com

SEAL:

This drawing, as an instrument of service, is the property of Cumulus Architects Inc. the copyright in the same being reserved to them. No reproduction is allowed without the permission of Cumulus Architects Inc. and when made must bear its name.

This drawing is not to be scaled. The contractor is to verify dimensions and data noted herein for conformity with the conditions on site and is responsible for reporting in writing any discrepancy to Cumulus Architects Inc. for adjustment.

Cumulus will not be liable for any claims or damages arising from the unauthorized use of this drawing or any portion thereof.

WSP

WSP Canada Inc.
150 Commerce Valley Dr. W, Thornhill, ON L3T 7Z3 Canada
T 905-882-0055 | www.wsp.com

NO	DESCRIPTION	DATE
9	ISSUED FOR ADDENDUM 1	2020/06/04
8	ISSUED FOR TENDER	2020/12/16
7	ISSUED FOR PERMIT	2020/11/21
6	MOH 2.3 RESUBMISSION	2020/06/20
5	MOH 2.3 SUBMISSION	2024/10/11
4	MOH 2.3 COSTING SUBMISSION	2024/09/13
3	MOH 2.3 COSTING SUBMISSION	2024/06/17
2	ISSUED FOR MOH 1.3/2.1/2.2	2023/10/18
1	ISSUED FOR MOH 1.3/2.1/2.2 DRAFT	2023/09/19

SHEET REVISION

PROJECT:
THP CANCER CARE EQUIPMENT
2200 Eglinton Ave W.
Mississauga, ON L5M 2N1

TITLE:

GROUND FLOOR
LIGHTING NEW WORK

PROJECT NO:

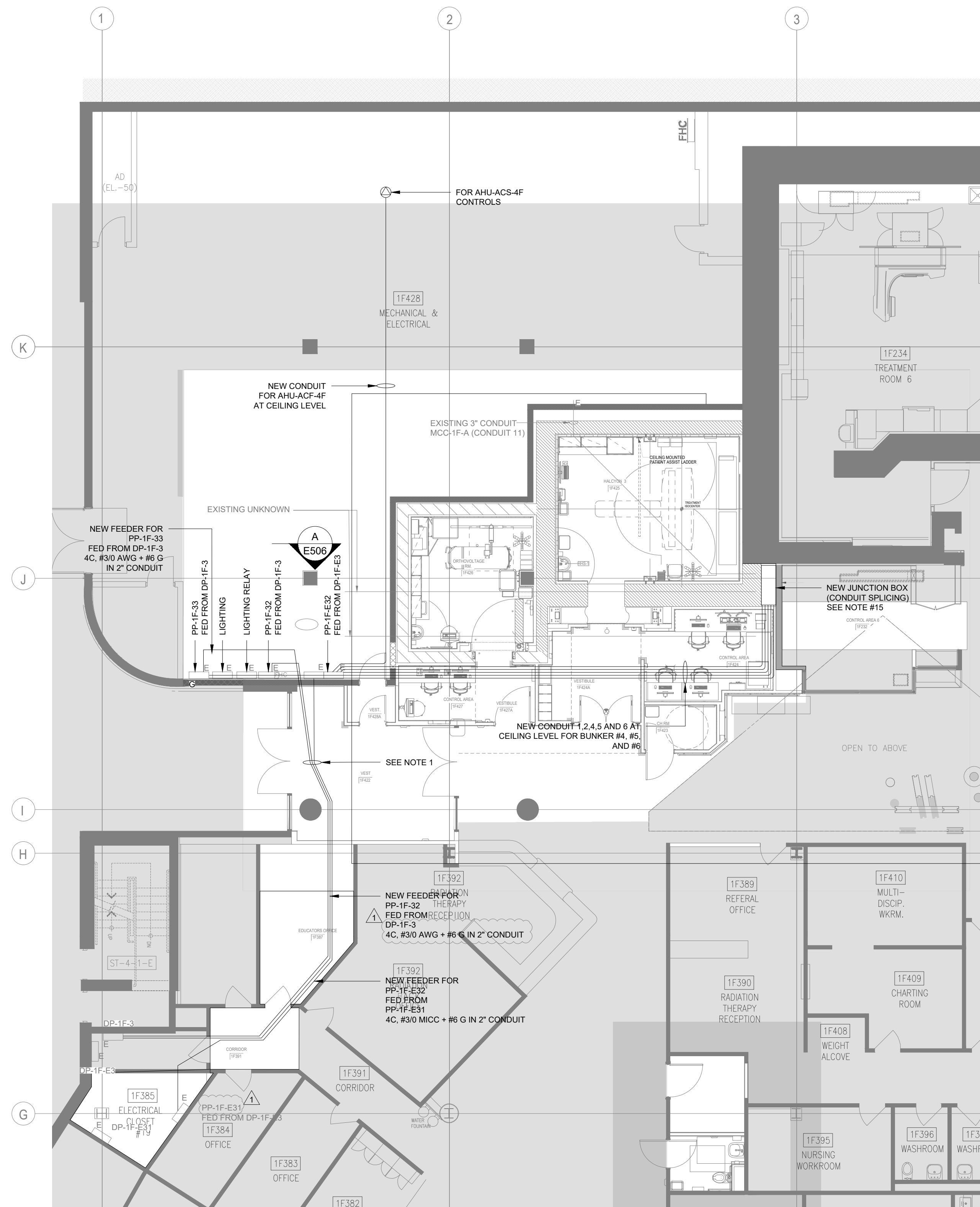
CA0003878.3329

CHECKED:

J.L.

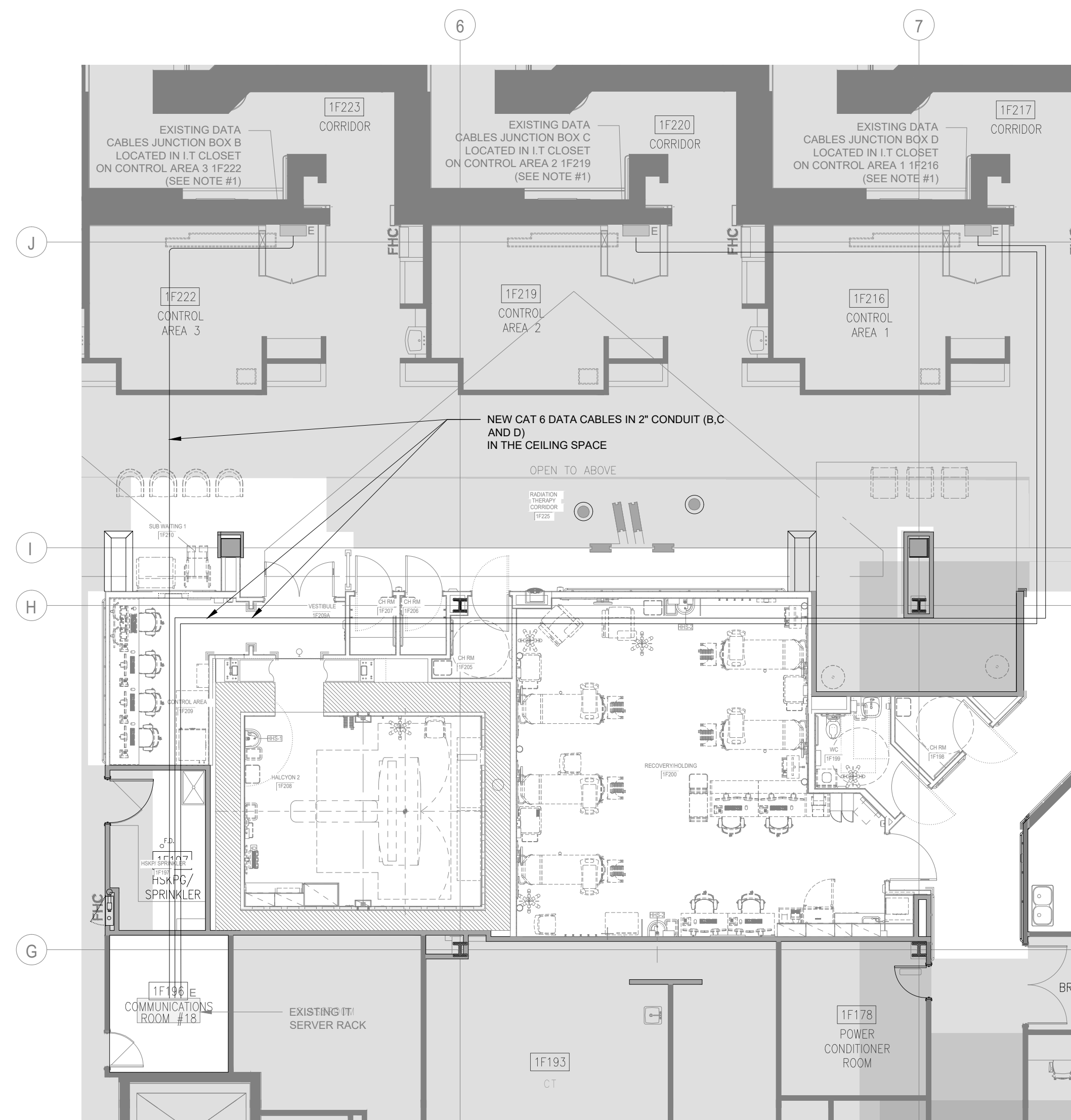
DRAWING NO:

E200



1 PART PLAN - GROUND FLOOR HALCYON #3 - FEEDER ROUTING - NEW WORKS
E506 1:100

- ## HALCYON #3 DRAWING NOTES:
1. CONDUIT TO PASS THROUGH THE CEILING SPACES OF WORKROOM IF-387 AND VESTIBULE IF-422 BACK INTO THE MECHANICAL ROOM 1 F428.
 2. CONTRACTOR TO COORDINATE ON SITE THE EXACT PATH OF FEEDER IN CEILING LEVEL.
 3. CONTRACTOR TO COORDINATE WITH CLIENT ON THE PROPOSED REROUTING. THE PROPOSED ROUTING WILL RESULT IN AN EXTENSIVE AMOUNT OF WORK IN OFFICES OUTSIDE OF THE ALREADY IDENTIFIED SCOPE AREAS FOR THE CANCER CARE PROJECT.
 4. EXHAUST FAN EF-14 WILL BE DECOMMISSIONED AND REMOVED. THEREFORE, POWER TO EXHAUST FAN EF-14 IS NOT LONGER REQUIRED, AND THIS WIRING AND CONDUIT WILL BE REMOVED BACK TO SOURCE.
 5. THE POWER TO THE CONTROLS FOR AHU-AC54F CAN BE RE FEED FROM PANEL PP-1 F-E33 AS SHOWN IN FIGURE 4.3.2.1-1 BELOW.
 6. INTERCEPT AND SPLICE ALL THE CIRCUITS FROM THE UNDERGROUND CONDUITS AND RUN NEW FEEDS FROM PANEL PP-1 F-E32 AND PP-1 F-33 VIA THE CEILING SPACE.



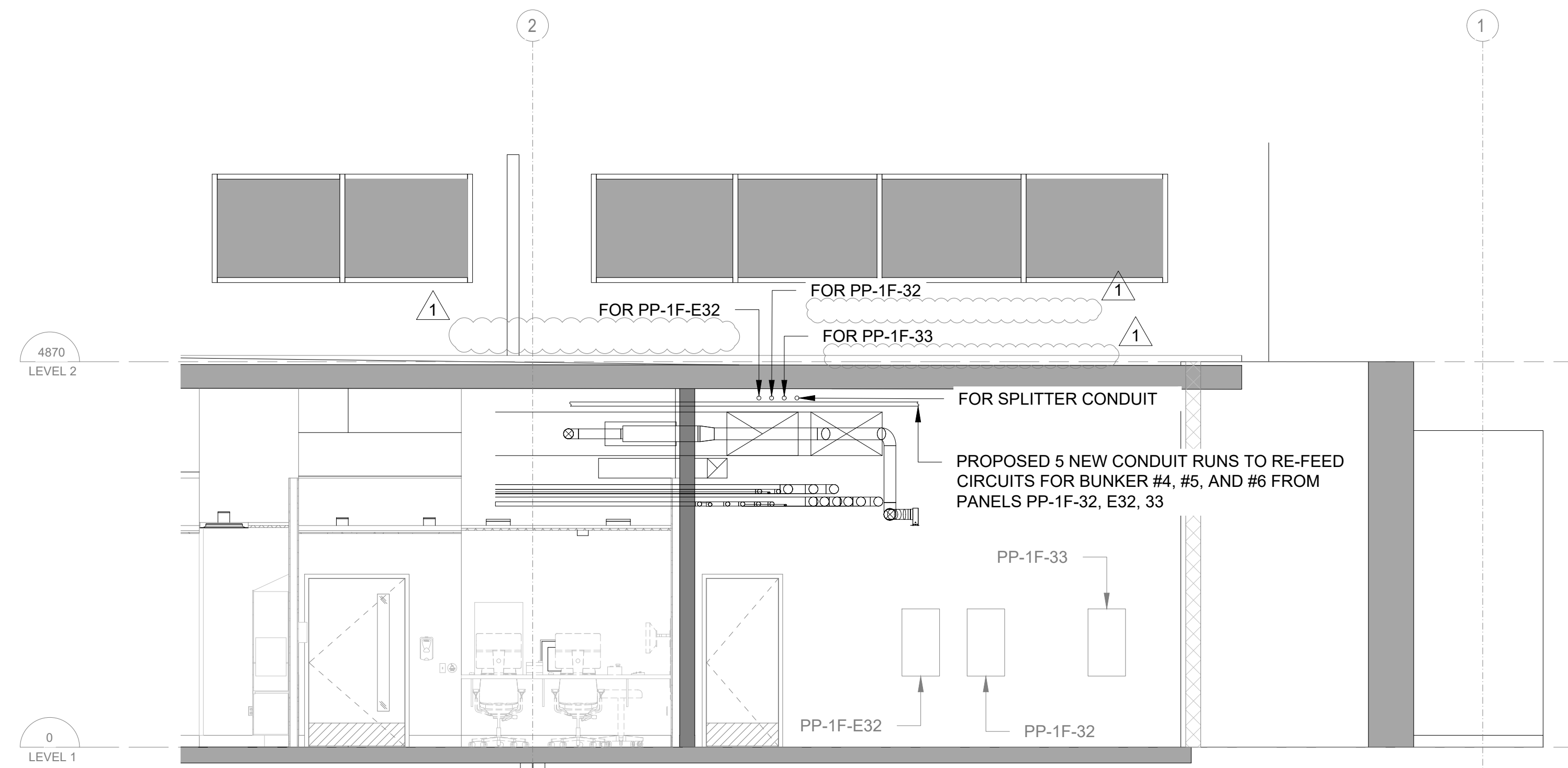
2	PART PLAN - GROUND FLOOR HALCYON #2 - FEEDER ROUTING - NEW WORKS	
E506	1:100	

- GENERAL NOTES:

1. CONTRACTOR TO COORDINATE THE PATH OF CONDUITS WITH THE NEW MECHANICAL WORK.
2. CONTRACTOR IS RESPONSIBLE FOR RELOCATING MECHANICAL EQUIPMENT AS NECESSARY TO ALLOW PROPER INSTALLATION OF CONDUITS. COORDINATION WITH THE MECHANICAL CONTRACTOR IS REQUIRED.
3. CONTRACTOR SHALL VERIFY THE EXACT ROUTING PATH OF ALL FEEDERS ON SITE.
4. CONTRACTOR SHALL COORDINATE FEEDER ROUTING WITH STRUCTURAL, ARCHITECTURAL, AND MECHANICAL TO ENSURE PROPER CLEARANCES AND FEASIBILITY OF INSTALLATION.
5. FOR EXACT LOCATION AND DETAILS OF STRUCTURAL WORKS, REFER TO STRUCTURAL LAYOUT DRAWINGS.
6. FOR EXACT LOCATION OF ALL MECHANICAL EQUIPMENT, REFER TO MECHANICAL LAYOUT DRAWINGS.
7. CONTRACTOR SHALL COORDINATE ON SITE WITH THE STRUCTURAL ENGINEER TO CONFIRM THE EXACT LOCATIONS AND DIMENSIONS OF ALL REQUIRED WALL/FLOOR OPENINGS.
8. CONTRACTOR IS RESPONSIBLE FOR VERIFYING ON SITE THE EXACT LOCATIONS OF ALL ELECTRICAL EQUIPMENT AND ALL REQUIRED PENETRATIONS FOR FEEDER ROUTING TO THE FINAL TERMINATION POINTS.
9. CONTRACTOR SHALL PROVIDE ALL NECESSARY ACCESSORIES, HARDWARE, SUPPORTS, AND MATERIALS REQUIRED FOR THE PROPER INSTALLATION AND CONNECTION OF NEW FEEDERS TO EXISTING AND NEW EQUIPMENT.
10. ALL POWER WIRING FOR MECHANICAL EQUIPMENT SHALL BE PROVIDED AND INSTALLED BY THE ELECTRICAL CONTRACTOR. REFER TO MECHANICAL DRAWINGS FOR DETAILED EQUIPMENT LOCATIONS. COORDINATION WITH THE MECHANICAL CONTRACTOR IS REQUIRED FOR ANY EQUIPMENT RELOCATION TO ACCOMMODATE NEW FEEDERS.
11. CONTRACTOR SHALL DETERMINE ON SITE THE EXACT LOCATIONS OF ALL JUNCTION BOXES. CONTRACTOR IS RESPONSIBLE FOR PROVIDING AND INSTALLING ALL REQUIRED JUNCTION BOXES AND ASSOCIATED ACCESSORIES, IN COORDINATION WITH OTHER DISCIPLINES.
12. CONTRACTOR SHALL PROVIDE ALL NECESSARY CABLE SPlicing TO ENSURE CONTINUOUS AND PROPER INSTALLATION OF ALL FEEDER RUNS.
13. THE CONTRACTOR IS RESPONSIBLE FOR PROVIDING ALL NECESSARY SUPPORTS AND EXECUTING ANY ADDITIONAL CEILING REMOVAL REQUIRED TO ENSURE THE PROPER INSTALLATION OF THE FEEDER ON SITE.
14. ALL NEW CONDUIT TO BE INSTALLED AT CEILING LEVEL.
15. THE CONTRACTOR IS RESPONSIBLE FOR COORDINATING THE EXACT LOCATION AND DIMENSIONS OF THE JUNCTION BOX ON SITE. IT IS THE CONTRACTOR'S RESPONSIBILITY TO CONNECT ALL NEW FEEDERS TO THE REMAINING EXISTING FEEDERS.
16. CONTRACTOR TO VERIFY ON SITE AND WITH THE HOSPITAL OPERATIONS THE UNUSED CAT6 CABLES THAT ARE NO LONGER REQUIRED (AROUND HALF OF THE EXISTING 20 CAT6 FOR EACH LINEAR ACCELERATOR) FOR EACH CABINET, AND PROVIDE NEW CAT6 CABLES AS REQUIRED.

HALCYON #2 DRAWING NOTES:

1. TERMINATE EACH CONDUIT IN EACH CONTROL AREA 1. CLOSET RESPECTIVELY. NEW DATA CABLES ARE THEN TO RE-FEED EXISTING EQUIPMENT THROUGH THE EXISTING DATA JUNCTION BOX LOCATED WITHIN THE 1. CLOSET.
2. THE NEW RUNS OF CONDUITS WILL RESULT IN AN EXTENSIVE AMOUNT OF WORK ON THE PART OF THE AIRBORNE MEDICAL SCOPE AREAS FOR THE CANCER CARE PROJECT. CONTRACTOR TO COORDINATE ON SITE WITH CLIENT THE AREAS ADDED TO THE ADDITIONAL SCOPE OF WORK.
3. CONTRACTOR TO COORDINATE THE CROSSING OF THE PUBLIC CORRIDOR WITH TRILLIUM TO SCHEDULE WORK TO MITIGATE DISRUPTION TO PATIENT CARE AND TREATMENTS IN BUNKERS 1, 2 AND 3.
4. CONTRACTOR TO DETERMINE ON SITE THE EXACT PATH OF NEW CONDUITS IN THE CEILING.



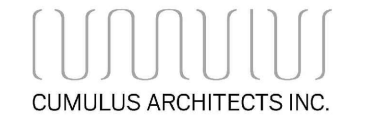
3 SECTION A
E506 1:50

CLIENT:



2200 Eglinton Avenue West
Mississauga, ON, L5M 2N1
905 813 2200
thp.ca

CONSULTANT:



160 Pears Ave. - Suite 300
Toronto, ON M5R 3P8
416-539-0763
www.cumulusarch.com

SEAL:

This drawing, as an instrument of service, is the property of Cumulus Architects Inc., the copyright in the same being reserved to them. No reproduction is allowed without the permission of Cumulus Architects Inc. and when made must bear its name.

This drawing is not to be scaled. The contractor is to verify dimensions and data noted herein for conformity with the conditions on site and is responsible for reporting in writing any discrepancy to Cumulus Architects Inc. for adjustment.

Cumulus will not be liable for any claims or damages arising from the unauthorized use of this drawing or any portion thereof.



WSP Canada Inc.
150 Commerce Valley Dr. W, Thornhill, ON L3T 7Z3 Canada
T 905-882-0055 | www.wsp.com

6	ISSUED FOR ADDENDUM 1	2026/06/04
5	ISSUED FOR TENDER	2025/12/16
4	ISSUED FOR PERMIT	2025/11/21
3	MOH 2.3 RESUBMISSION	2025/06/20
2	ISSUED FOR CONTRACT DOCUMENT	2025/06/06
1	ISSUED FOR DESIGN DEVELOPMENT	2025/04/29
NO	DESCRIPTION	DATE

PROJECT:
THP CANCER CARE EQUIPMENT
2200 Eglinton Ave W,
Mississauga, ON L5M 2N1

TITLE:
GROUND FLOOR HALCYON 2 AND 3
FEEDERS ROUTING NEW WORKS

PROJECT NO:
CA0003678.3329

CHECKED:
J.L.

DRAWING NO:

E506

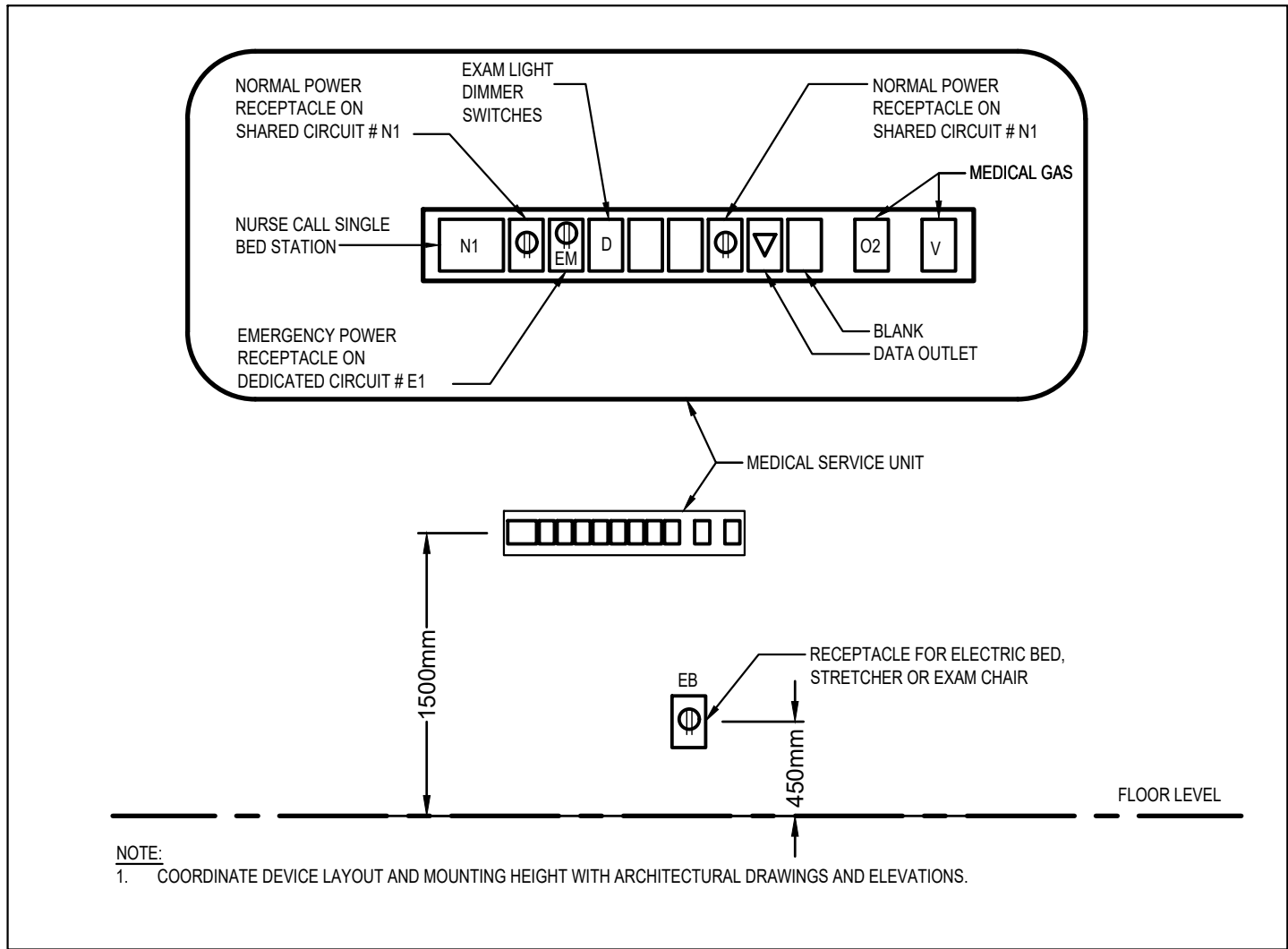
TYPE	CATALOG ORDER KEY	PRODUCT DESCRIPTION	CEILING TYPE	LOCATION	DIMENSION (inch/cm)	VOLTAGE	WATTS	CRI	COLOUR TEMP	LUMENS	DRIVER	MOUNTING			ACCEPTABLE MANUFACTURER	NOTES
												RECESSED	SURFACE	PENDANT		
A1	COOPER - FLD6C-20-D010-FEU6C-1025-90-35-F6LC-M-1-AMF	6" SEALED LED DOWNLIGHT, WET LOCATION GASKETING ON TOP OF FLANGE, ANTIMICROBIAL IP65 RATED	ACT/DRYWALL	HALCYON, ORTHOVOLTAGE	6"	120	31.5	90	3500	2000	0-10V	X			COOPER	1, 2
A2	COOPER - LD4C159035D010B26M2H	ROUND DOWNLIGHT, MEDIUM BEAM, COMFORT CLEAR FINISH, WHITE FLANGE	ACT/DRYWALL	CORRIDORS, PATIENT CHANGE ROOM	4"	120	15.5	90	3500	900	0-10V DIMMMABLE	X			COOPER	1, 2
A2H	COOPER - LD4C259035D010B26M2H	SAME AS 'A2' ABOVE, EXCEPT FOR 2500LM OUTPUT.								2500						
A3	COOPER - LD6C209035D010B26W1MW	RECESSED 6 INCH LED DOWNLIGHT WITH WIDE BEAM DISTRIBUTION. CAST ALUMINUM HOUSING AND EXTRUDED ALUMINUM HEAT SINK. SELF FLANGED WHITE REFLECTOR WITH WHITE TRIM. ANTI-MICROBIAL FINISH. CUL LISTED FOR DAMP LOCATION.	DRYWALL	WASHROOMS	6"	120	21.1	95	3500	2000	0-10V DIMMMABLE	X			COOPER	1, 2
L1	COOPER - ORLF-12-4-INS-ASYR-LD4-3STD-35-120-ED1D2-MIL2-90 c/w DFCL-1248AMW-U	RECESSED LED 1X4 SURGICAL LUMINAIRE, FLANGE. ONE PIECE ACRYLIC LENS WITH CLEAR SMOOTH LENS BELOW PRIMARY LENS. SILICONE GASKET AROUND ACRYLIC LENS. ANTI-MICROBIAL FINISH ON ALL PAINTED PARTS. SUITABLE FOR CLEAN ROOM ENVIRONMENTS AND IP65 RATED. TO MEET MIL STANDARD 461E/462/463 EMI AND RF. FILTER TO ELIMINATE RFI FROM POWER SUPPLY AND LINE FEEDBACK. ANTI-MICROBIAL FINISH.	ACT	CONTROL AREA	1'X4'	120	51	90+	4000	5538	0-10V DIMMMABLE	X			COOPER	1, 2
L1A	COOPER - ORLF-12-2-INS-ASYR-LD4-3STD-35-120-ED1D2-MIL2-90 c/w DFCL-1248AMW-U	SAME AS 'L1' ABOVE, EXCEPT FOR 1'X2' DIMENSIONS.			1'X2'											
L1H	COOPER - ORLF-12-4-INS-ASYR-LD4-2H135/1STD-G52-120-ED1D2-MIL2-90 c/w DFCL-1248AMW-U	SAME AS L1 PROVIDE PROGRAMMABLE COLOURED FEATURE														
L2	COOPER - 24FCZ2-110VHE-UNV-L935-CA125-CD2-AMW	2X4 MULTILEVEL EXAM AND AMBIENT LUMINAIRE	ACT/DRYWALL	RECOVERY HOLDING	2'X4'	120	113	90+	4000	12500/4500	0-10V DIMMMABLE	X			COOPER	1, 2
L3	COOPER - 14CZ2-44-UNV-L835-CD1-U	RECESSED 1X4 LED ARCHITECTURAL LENSED TROFFER WITH SMOOTH OPAL ACRYLIC LENS. T-BAR GRID. DIE FORMED CODE GAUGE PRIME COLD ROLLED STEEL HOUSING.	ACT/DRYWALL	PHYSICS LAB WORKROOM, DOSIMETRY WORK ROOM	1'X4'	120	48	90+	3500	4350	0-10V DIMMMABLE	X			COOPER	1, 2
L3A	COOPER - 24CZ2-44-UNV-L835-CD1-U	SAME AS 'L3' ABOVE, EXCEPT FOR 2X4 DIMENSIONS.			2'X4'											
L4	COOPER - 14GR-LD5-50-F1INV-UNV-L835-CD1-PAF-G2-U	RECESSED LED 1X4 GASKETTED TROFFER. A12.125 HPPROST INVERTED PRISMATIC ACRYLIC LENS. T-BAR GRID. CONSTRUCTED OF DIE FORMED CODE GAUGE CRS. GASKETS DOOR FRAME TO HOUSING AND LENS TO DOOR FRAME & TO GRID	ACT/DRYWALL	CLEAN SUPPLY	1'X4'	120	28	90	3500	3500	0-10V DIMMMABLE	X			COOPER	1, 2
L5	COOPER - 24CZ2-45-UNV-L835-CD1-U	RECESSED 2X4 LED ARCHITECTURAL LENSED TROFFER WITH SMOOTH OPAL ACRYLIC LENS. T-BAR GRID. DIE FORMED CODE GAUGE PRIME COLD ROLLED STEEL HOUSING.	ACT	MAINTENANCE ROOM	2'X4'	120	24.5	90	3500	3500	0-10V DIMMMABLE	X			COOPER	1, 2
U1, U2, U3	COOPER - HU30MSCTD36P	UNDERCABINET TASK LIGHT - VARIOUS LENGHTS TO SUIT (23", 34", 46")	MILLWORK	WORKSURFACES, SINKS BELOW MILLWORK		120	9, 14, 18	90+	3500	705/1121/1416	TRIAC/ELV		X			2
W1	COOPER - SQW-F-050U/050D-935-1D-UNV-STD-W-WM-2	2' WALL MOUNTED VANITY LIGHT	WALL MOUNT	WASHROOM VANITY	2'	120	12.2	90	3500	1262	0-10V		X			2
S2	COOPER SKYLIGHT CVEN-24-4-LD2-UNV-ED1D1-###-2/24	TWO 610X1220 LED SKYLIGHT PANEL CONFIGURATION	ACT	HALCYON ROOMS	2'X4'	120		80	4000	2 x 6700	0-10V DIMMMABLE	X				2
S4	COOPER SKYLIGHT CVEN-24-2-LD2-UNV-ED1D1-###-4/22	FOUR 610X610 LED SKYLIGHT PANELS CONFIGURATION	ACT	ORTHOVOLTAGE ROOM	2'X2'	120		80	4000	4 x 3400	0-10V DIMMMABLE	X				2
X1			DRYWALL/ACT			120							X			
X2	EMERGI-LITE ES SERIES ES-XX-W-1	EXTRUDED ONE PIECE ALUMINUM PICTOGRAM EXIT SIGN. UNIVERSAL MOUNTING. LEGEND ON CLEAR ACRYLIC PANEL COMES STANDARD WITH DOUBLE FACE PICTOGRAMS AND ARROWS. EVEN ILLUMINATION WHITE LED SOURCE.	WALL MOUNTED			120							X			
X3			OPEN	CORRIDORS, EXITS		120	2.5							X	EMERGLITE	2
NOTES: 1. FOR DRYWALL APPLICATION, ORDER FLANGE KIT SEPARATELY 2. CONTRACTOR TO VERIFY AND PROVIDE ALL MOUNTING ACCESSORIES INCLUDING POWER CORD, CONNECTORS ETC BEFORE ORDERING THE FIXTURE. 3. PROVIDE DIMMMABLE DRIVER. 4. FIXTURE TO BE SUSPENDED BELOW EXPOSED PIPING WHERE APPLICABLE. 5. REFER TO ARCHITECTURAL DETAIL DRAWING FOR EXACT SHAPE AND LENGTH TO ORDER EACH COMPONENT. 6. PROVIDE TAMPER PROOF OR VANDAL RESISTANT SCREWS AS NECESSARY. 7. PROVIDE REMOTE POWER SUPPLY WITH EMI FILTER (MIRISPF) ORDERED SEPARATELY. CONNECT MAX 3 LUMINAIRES PER 120V POWER SUPPLY. 8. MODULES AND JOINERS TO BE SELECTEED AS PER ARCHITECT'S LAYOUT. PROVIDE DRIVER HOUSINGS FOR EACH 85W OF LINEAR SECTION. 9. EXACT SIZE AND FINISH COLOR TO BE COORDINATED WITH ARCHITECT BEFORE ORDERING. 10. PROVIDE DIMMMABLE TRANSFORMER.																

2

E900

LUMINAIRE SCHEDULE

N.T.S



1

E900

MEDICAL SERVICE UNIT (MSU1) ELEVATION

N.T.S

CLIENT:

2200 Eglinton Avenue West
Mississauga, ON, L5M 2N1
905 813 2200
thp.ca

CONSULTANT:

160 Pears Ave. - Suite 300
Toronto, ON M5R 3P8
416-539-0763
www.cumulusarch.com

SEAL:

This drawing, as an instrument of service, is the property of Cumulus Architects Inc., the copyright in the same being reserved to them. No reproduction is allowed without the permission of Cumulus Architects Inc. and when made must bear its name.

This drawing is not to be scaled. The contractor is to verify dimensions and data noted herein for conformity with the conditions on site and is responsible for reporting in writing any discrepancy to Cumulus Architects Inc. for adjustment.

Cumulus will not be liable for any claims or damages arising from the unauthorized use of this drawing or any portion thereof.

WSP Canada Inc.
150 Commerce Valley Dr. W, Thornhill, ON L3T 7Z3 Canada
T 905-882-0055 | www.wsp.com

9	ISSUED FOR ADDENDUM 1	2026/06/04
8	ISSUED FOR TENDER	2025/12/16
7	ISSUED FOR PERMIT	2025/11/21
6	MOH 2.3 RESUBMISSION	2025/06/20
5	MOH 2.3 SUBMISSION	2024/10/11
4	MOH 2.3 COSTING SUBMISSION	2024/09/13
3	MOH 2.3 COSTING SUBMISSION	2024/06/17
2	ISSUED FOR MOH 1.3/2.1/2.2	2023/10/18
1	ISSUED FOR MOH 1.3/2.1/2.2 DRAFT	2023/09/19
NO	DESCRIPTION	DATE

SHEET REVISION

PROJECT:
THP CANCER CARE EQUIPMENT
2200 Eglinton Ave W,
Mississauga, ON L5M 2N1

TITLE:
LUMINAIRE SCHEDULE
AND DETAILS

PROJECT NO:
CA0003678.3329

CHECKED:
J.L.

DRAWING NO:

E900